



# APM Strategy

Decrease O&M Expenditures  
& Increase Profitability with  
a Comprehensive Asset  
Strategy solution

# Addressing your modern business challenges

Asset intensive industrial businesses manage substantial operating and maintenance (O&M) budgets that represent a considerable portion of their fixed costs, which directly impact their profitability. A significant portion of this budget is spent maintaining and operating the assets used to produce their products. However, for many businesses their current asset management strategies are not under control, nor are they optimized and aligned to achieve the highest profitability at the lowest risk and cost. Many also lack the systems or processes in place to comply with ISO 55000 standards.

With respect to asset management strategies and practices, profitability is directly impacted due to

## Ineffective and inefficient equipment strategies:

Optimize by determining the most effective types and frequencies of tasks to achieve business objectives for risk mitigation, cost containment and sustained reliability improvements

## Lack of standardization and control:

Implement best practice equipment maintenance, monitoring and inspection strategies across the enterprise

## Lack of an integrated, holistic and evergreen approach:

Establish dynamic equipment strategies that harmonize across functional areas to ensure a sustainable cycle of continuous improvement

## Operations & Maintenance Optimization

APM Strategy provides a common methodology to develop and manage asset strategies by using a risk-based approach to conduct analysis of individual assets, a group of assets, or an asset system. By balancing risk, production goals, and resource investment, APM Strategy allows asset-intensive organizations to focus costs on the most critical assets—reducing maintenance and inventory costs, increasing availability and reliability, and moving away from reactive maintenance practices to a proactive approach.

APM Strategy supports the following work processes:

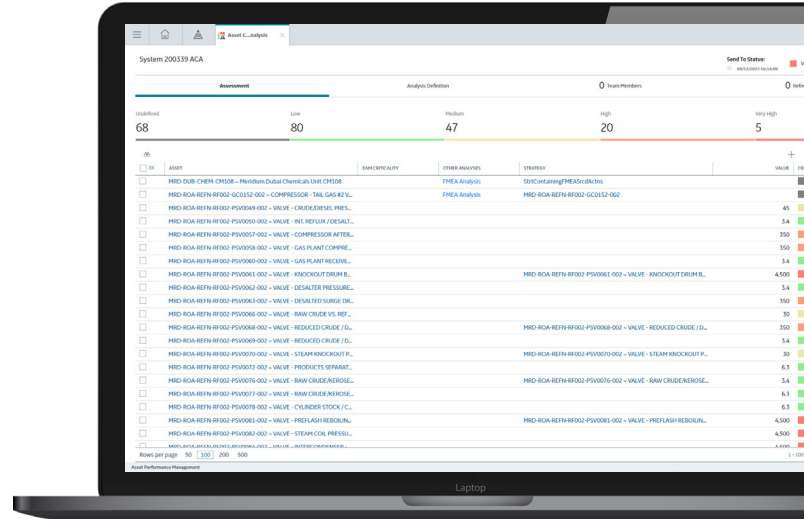


## MODULES

### ASSET CRITICALITY ANALYSIS (ACA)

#### Focus on Critical Assets

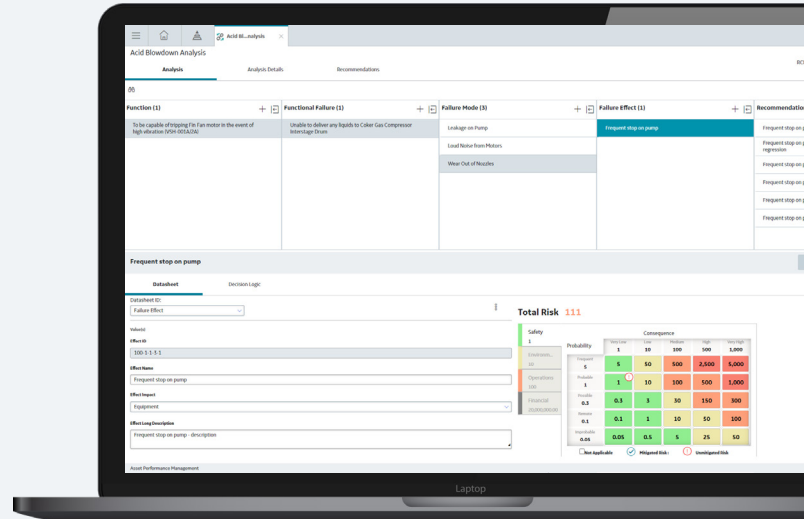
Enables users to define the criticality of assets based on the worst likely case consequence of failure of the asset to provide an overall criticality value. Using ACA, you can determine which of your systems, locations, and pieces of equipment have the highest risk based on your organization's definitions.



### RELIABILITY CENTERED MAINTENANCE (RCM)

#### Assess Systems Risk

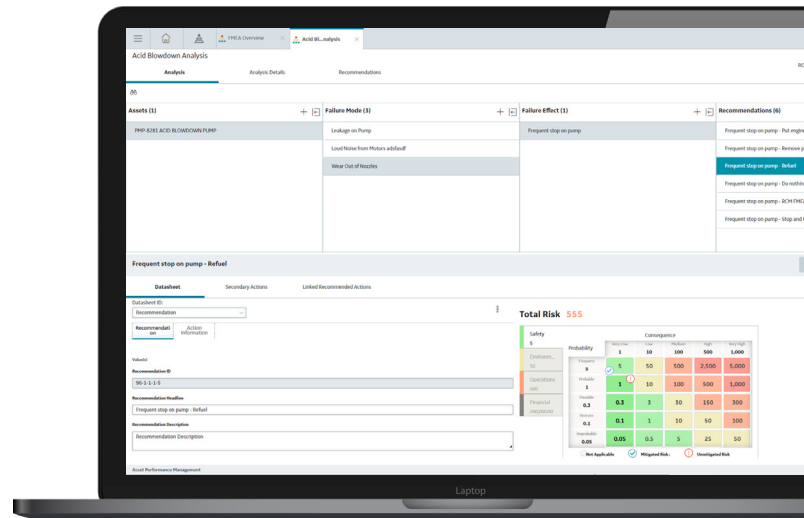
By focusing on system functions, the RCM capability is designed to develop asset strategies that help reduce the effects of functional failures, which, for some systems, may have a more significant impact on production and costs than simple mechanical failures.



### FAILURE MODES AND EFFECTS ANALYSIS (FMEA)

#### Assess Equipment Risk

In contrast to the Reliability Centered Maintenance analysis, which focuses on functional failures at the system level, the Failure Modes and Effects Analysis capability facilitates the identification and mitigation of critical failure modes defined at the equipment level.

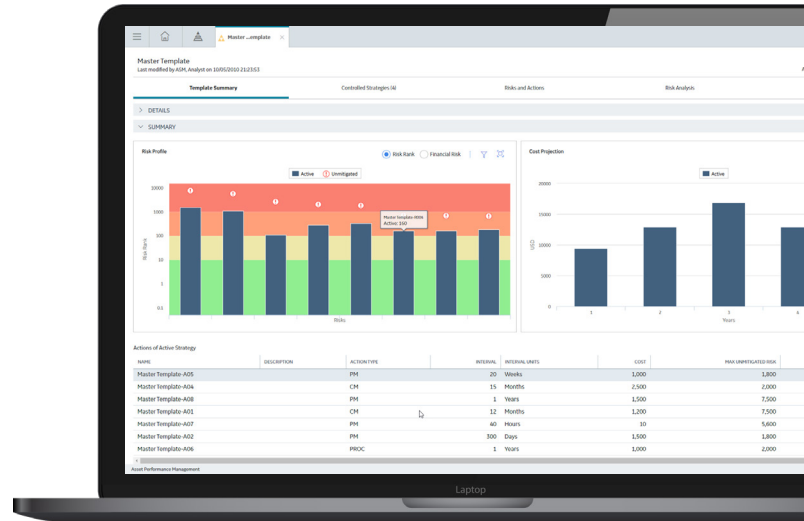


## MODULES

### ASSET STRATEGY MANAGEMENT (ASM)

#### Qualitative Risk Analysis

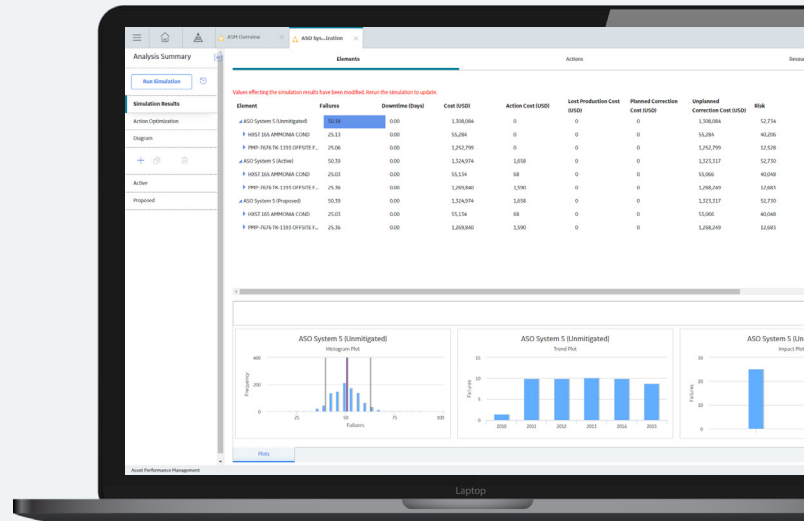
Provides a common methodology to define risks and their mitigating actions for any asset, providing the ability to evaluate existing plans with basic qualitative risk analysis that is designed to be both straightforward and easy to use.



### ASSET STRATEGY OPTIMIZATION (ASO)

#### Quantitative Strategy Modelling

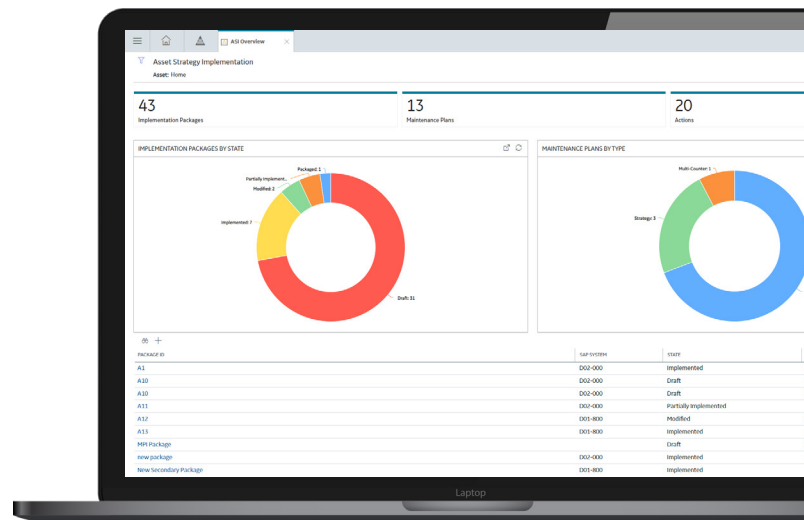
Extends the qualitative risk/cost analytical capabilities of Asset Strategy Management through advanced, quantitative strategy modelling and Monte Carlo simulation for assets and systems resulting in optimized availability, reliability and cost while managing risk.



### ASSET STRATEGY IMPLEMENTATION (ASI)

#### Implementation with SAP

Enables users to build implementation packages containing maintenance plans, maintenance items, task lists and operations to which strategy actions can be linked for the purposes of implementation in SAP.



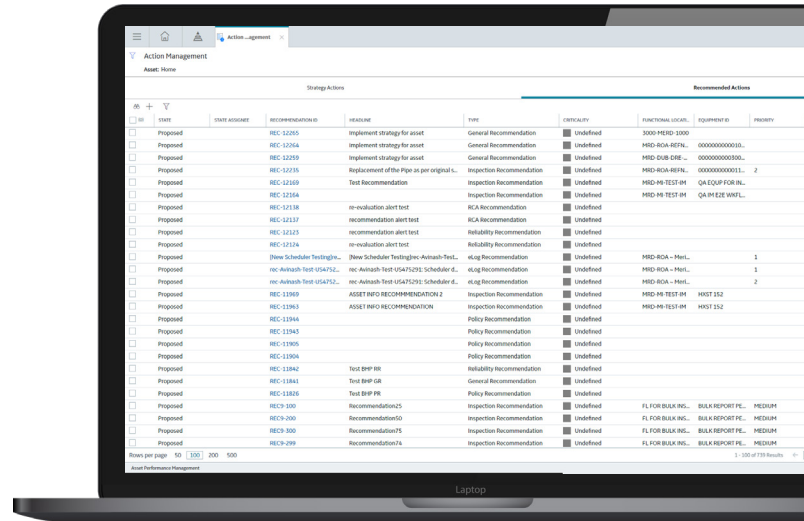


## MODULES

### ACTION MANAGEMENT

## Manage Corrective Actions

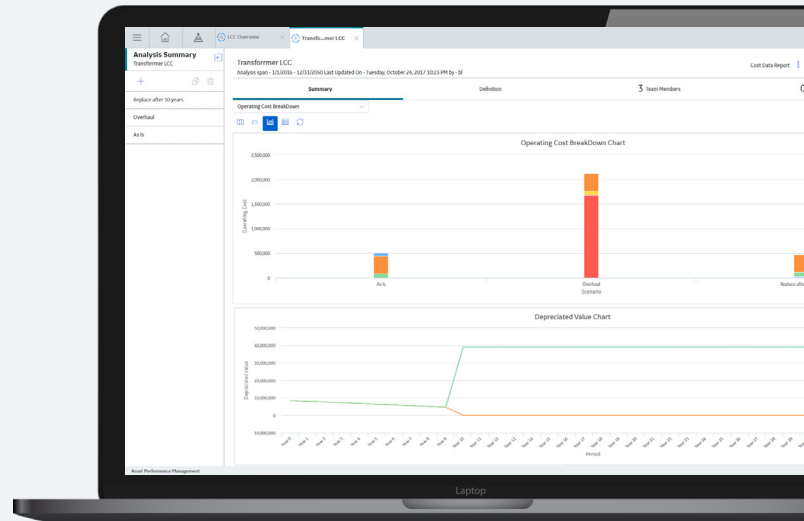
Enables users to manage recommended corrective actions generated from various sources across APM as well as implement planned actions that are defined with the Asset Strategy Management (ASM) application. It provides visibility and management of all actions and tasks for visibility within a single holistic view across the asset hierarchy.



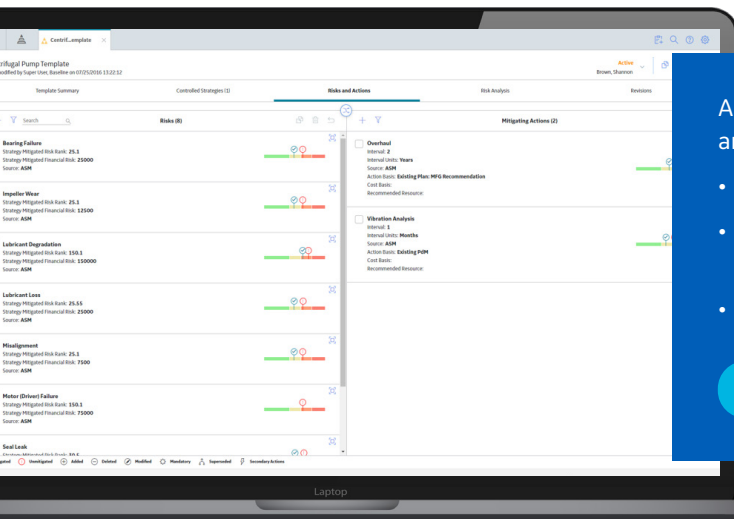
### LIFE CYCLE COST ANALYSIS (LCC)

## Balance Costs & Plan Budgets

Asset lifecycle costs can be viewed from the perspective of the total cost of ownership of assets. By contributing to decisions regarding when to repair versus when to replace, asset strategies and equipment performance can be optimized over the long term, thereby helping to reduce costs for entire sites or fleets over defined accounting periods.



### ASSET STRATEGY ACCELERATORS



A collection of predefined templates that contain the known failure modes and prescribed mitigating actions for specific asset or equipment types.

- Accelerate customer time to value
- Reduce plant personnel and resources required to perform strategy development
- Rapid deployment and standardization of best practices

[LEARN MORE](#)

# GE Digital's APM Suite

GE Digital APM increases asset reliability and availability while optimizing maintenance costs, mitigating operational risks, and reducing total cost of ownership (TCO). The software connects disparate data sources and uses advanced analytics to turn data into actionable insights while fostering collaboration and knowledge-management across the organization. Available on premises or in the cloud, APM works across all equipment, all OEMs, and all industries, across the plant, and across the fleet.



## Industrial Data Diagnostics

**Pinpoint opportunities to improve data quality and asset performance**

Data quality recommendations  
Benchmark analytics

Failure mode analysis  
PM diagnostics

Manufacturer comparisons  
Improvement tracker



### APM Health

**Unified view of assets' current state & health**

Rounds / Rounds Pro  
eLogs  
Health manager  
Calibration management



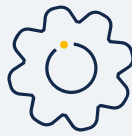
### APM Reliability

**Predicting equipment issues**

Reliability analytics  
Root cause analysis  
**Performance Intelligence**  
Thermal Performance and Economic Advisory

#### SmartSignal

Predictive diagnostics  
Digital twin blueprints



### APM Strategy

**Reduce risk & optimize life cycle cost**

RCM/FMEA  
Strategy management  
Strategy optimization  
Strategy implementation  
Lifecycle cost analysis



### APM Integrity

**Helping to keep facilities contained & compliant**

Compliance management  
Inspection management  
Thickness monitoring  
Risk based inspection



### APM Safety

**Reduce hazards risk within industrial processes**

Hazard analysis  
SIS management  
Management of change



## APM Foundation / Essentials

### IT/OT Connectivity & Integration

EAM systems  
HMI/SCADA, Historian, MES systems  
Edge OT connectivity and analytics  
GIS systems

### Data Management & Processing

Common asset model (or) hierarchy  
Analytics management and execution\*  
Infrastructure Data Fabric\*  
Policy designer  
End-to-end security

### Monitoring, Analysis & Event Management

Advanced Visualization\*  
Dashboards, interactive data analysis  
Criticality, alerts, cases, recommendations  
HMI visualizations and alarms\*



## Explore the benefits of APM

- Improves reliability, availability, and productivity
- Optimizes maintenance costs
- Mitigates risk
- Maintains technical expertise (industry and organizational knowledge)
- Delivers continuous improvement

[Learn more](#)

about our complete APM offering

Ready to leverage your asset data in ways that can increase productivity, mitigate risk, and optimize costs?

Schedule a call with GE Digital

[BOOK A CALL](#)

## About GE

GE Digital, an integral part of GE Vernova's portfolio of energy businesses, is a \$1 billion software business putting data to work to accelerate a new era of energy. GE Digital has pioneered technologies like Industrial AI and Digital Twins to serve industries that matter for decarbonization like energy, manufacturing, aviation. Our software drives insights customers need to transform how they create, orchestrate, and consume energy. Over 20,000 customers world-wide use our software to fuel productivity and reliable operations while reducing costs and carbon for a more sustainable world. For more information, visit [www.ge.com/digital](http://www.ge.com/digital). GE Vernova, a dynamic accelerator comprised of our Power, Renewable Energy, Digital and Energy Financial Services businesses, focused on supporting customers' transformations during the global energy transition.

## Contact Information

Americas: 1-855-YOUR1GE (1-855-968-7143)

[gedigital@ge.com](mailto:gedigital@ge.com)

[www.ge.com/digital](http://www.ge.com/digital)

© 2022 General Electric Company - All rights reserved.

GE Digital reserves the right to make changes in specifications and features shown herein, or discontinue the product described at any time without notice or obligation. Contact your GE Digital representative for the most current information. GE and the GE Monogram, are trademarks of General Electric Company. GE Digital, a division of General Electric Company.